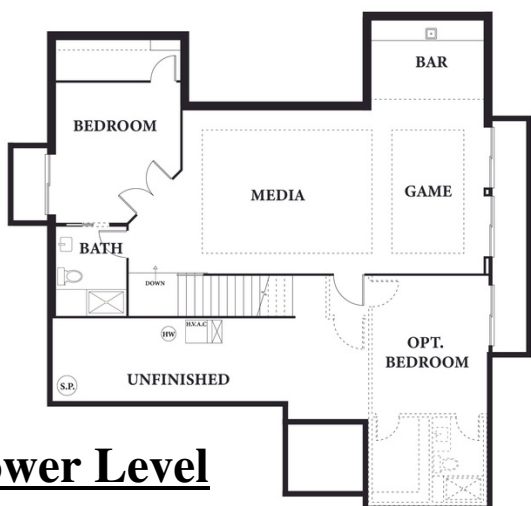
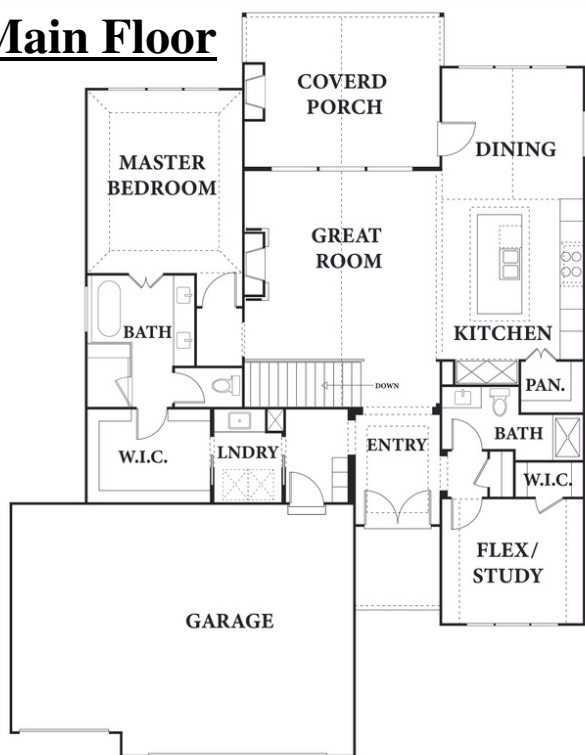




Main Floor



Lower Level

THE LAGUNA II



4
Bedrooms



4
Bathrooms



3-Car
Garage

3,118 Square Feet

PROPERTY INFORMATION

1124 South Hillswick
Creekmoor

FEATURES:

Main floor master
On golf course



CONTACT US (913)-851-4444 info@dustyrhodeshomes.com



VISIT US

www.dustyrhodeshomes.com

Pricing, square footage, renderings, etc are deemed reliable but not guaranteed, and are subject to change without notice.

City/subdivision requirements may affect pricing. Consult Builder for details.